

# NEWSTEAD

## MODEL COUNTRY SCHOOL

Phone: 07 8565946

[www.newsteadschool.co.nz](http://www.newsteadschool.co.nz)

Mobile: 02748968309

Email: [office@newstead.school.nz](mailto:office@newstead.school.nz)

Dear Parents, Students and Community,

Another great week of learning here at Newstead Model Country School! Welcome back to Term 2. We hope you all managed to get some sort of a break and enjoyed doing a few fun things with your children. The children have come back to school refreshed and have settled in well to 'school life'.

We've had quite an action packed first week. We were fortunate enough to have Brett Fairweather come and take the kids for a session of Jump Jam and we also had Reg and Jeff come to show the children a military truck and cannon as part of our Anzac Inquiry. We're so lucky to have these opportunities and the children get a lot from them.

The Winter Sports Season gets underway this weekend. We have around 90 of our students participating in a winter sport which is amazing. Our Student Mentors will be working on a Newstead School Sports Code of Conduct for all of our players next week. This will be displayed on our notice board and sent home. It's timely to remind ourselves, both parents and players, of the attitudes and behaviours that will ensure everyone has fun and a sense of fulfillment from the sporting season. There is lots in the media at the moment about the positive side to competing and the ugly side to competing. Again, we're lucky here at Newstead that so many of our parents and children approach games in a positive manner. This includes lots of encouragement, both on the field or court and on the sideline, playing hard but fair, and winning and losing with grace and dignity. This is why we have so many children wanting to play sport at our school. Thanks for your cooperation with this and thank you, in advance, to all the coaches who are giving up their valuable time to take the teams.

Have a great weekend.

Naku noa.

Drew Campbell - Principal



### UPCOMING DATES:

#### May

8	Lit Quiz
10	Whakatau
18	Pink Shirt Day
23	BOT Meeting 7pm Firewise Visit for Junior Classes
28	PTA AGM 7pm Eureka Room
29	ICAS Science
30	PTA Domino's Pizza Night

#### June

4	Queens Birthday
8	Tough Kids Challenge
13	ICAS Spelling
14	ICAS Writing PTA Oxford Pie Collection Eureka Room
15	Matariki begins
17	PTA Movie Night @ 3pm
22	SEHS Sports Day
25	Teachers Union Meeting School Closed for afternoon
28	7 Aside (Yr 5&6) Tamahere
29	School Disco Hamilton Car Club, Vaile Rd

#### July

2	Photo Day
5	Cluster Schools Singing
6	Last Day of Term Reports go home

### NOTICES:

No notices have gone home this week.

## Class Awards

**Kiwi** - Emma, Caleigh, Bella, Campbell

**Tiwaiwaka** - Cara, Isla, Zoe, Jack

**Kakapo** - Avery, Reef, Jacob K, Ronin, Leo

**Ruru** - Josh

**Kereru** - Aaliyah - Rose, Declan, Samuel, Darius

**Tui** - Paige, Ava, Deniz

## PTA News

AGM 28<sup>th</sup> May, in Eureka Room. Everyone Welcome.

Further information attached.

## Sports News

Good luck to all our soccer, netball and hockey players for an exciting season!

## Soccer Draw

Saturday 5 May		
Newstead Aces – First Kicks POD 2		
9am	@ Galloway Park	
Newstead Ninjas – Under 7 (Silver)		
10am	@ Newstead School	Vs Southwell 7 <sup>th</sup> Grade
10.50am	@ Newstead School	Vs Gordonton Torpedos
Newstead Rebels – Under 8 Girls (Copper)		
10.25am	@ Jensen Park J5	Vs Tauwhare Tornadoes
10.50am	@ Jensen Park J5	Vs Hillcrest Fantails
Newstead Warriors – 8 <sup>th</sup> Grade (White)		
10.00am	@ Galloway Park J6	Vs Claudelands Rovers
10.25am	@ Galloway Park J6	Vs Tamahere
Newstead Strickers – 10 <sup>th</sup> Grade (Yellow)		
11.00am	@ Grosvenor Park 3	Vs North. United Sevilla

[http://www.newstead.school.nz/10096/file\\_sets/37-soccer](http://www.newstead.school.nz/10096/file_sets/37-soccer)

## Hockey Draw

Please note this starts next week... 12 May

Newstead Turbos – Kiwi Dev A Grading Pool D		
10am	@ GHC 1 QA	Te Totara All Stars

[http://www.newstead.school.nz/10096/file\\_sets/39-hockey](http://www.newstead.school.nz/10096/file_sets/39-hockey)

## School Lunches

At Newstead School we have 2 options for those that would like to buy lunches:

**Daily:**

Delivered to the school office before morning tea

[www.yourlunchbox.co.nz](http://www.yourlunchbox.co.nz) for more information

**Friday:**

Lunches are delivered to Eureka Room by 12.30pm for your child to collect

[www.lunchorders.co.nz](http://www.lunchorders.co.nz) for more information

## Community Notices

**Babysitter Available** *Ex Newstead pupil.*

17 year old babysitter available for evenings and weekends. Experienced with children aged 1 - 11+, currently working at Newstead After School Care. Also available for house sitting and pet sitting.

Contact Emily Hallam [emilyhallam08@gmail.com](mailto:emilyhallam08@gmail.com) or 027 347 0687 for more information.

**Hamilton Operatic Society** Sister Act is the feel-good musical comedy smash based on the hit 1992 film that has audiences jumping to their feet! This uplifting musical was nominated for five Tony Awards, including Best Musical. Tickets are on sale now at Ticketek. Oh and are you sorted for Mother's Day yet? How about thinking outside the box this year and getting mum something she'll really rejoice about? A superior gift for a superior mother?

Check out the cast and production team list for Sister Act [here](#)

**Wanted To Buy**

House Wanted For Relocation, Private Cash Buyer

Anything Considered

Please Phone Kevin or Neville (027)243-5818

**School Bank Account Details**

Newstead Model School

ASB Bank 12-3152-0233579-00

HAVE YOU DOWNLOADED OUR SCHOOL APP YET?

NEVER MISS IMPORTANT SCHOOL INFORMATION AGAIN!



\*Events

\*Notices

\*Instant school messages

\*Absentee

\*Newsletters

\* Permission Slips



Simple free download: In the Play Store and App Store search 'Skool Loop NZ' & choose our school once installed.



## FUSION Marching Team



Fusion Marching Club is looking to grow our club We would like to invite New Members "To GIVE MARCHING A GO"

Ages: 5 years – 12 years

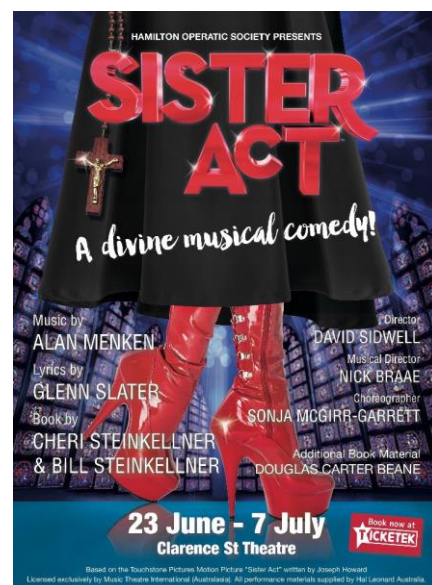
Our values – Teamwork, Respect and Self Discipline

Marching is a gentle non-conflict sport which offers Fitness, Friendships for life, Fun learning to music, and the opportunity to travel.

If you would like to join our Fusion Marching Club please contact for details:

Michelle: 021376288 or

[Fusion.marching.club@gmail.com](mailto:Fusion.marching.club@gmail.com).



# *PTA NEWS BITES*

## Fun Run Update

*Thank you* so much to our school community. We have raised over **\$10,500** in sponsorship, raffle sales and bbq sales. This is an amazing achievement and the PTA would like to thank everyone for their help.

We have ordered new book bins for the library as well as more pads to sit on and holders for them. The shade sail will soon be going up to finish off the entrance way. We are looking at other projects around school that need our attention.

## Entertainment Books

These are available on line. To purchase a book, go to

<https://www.entertainmentbook.co.nz/orderbooks/154g215>

Tell all your friends and family to support our school by buying their entertainment books through us.

## Lunch Box

Sophie Beck, local chef, has come to the rescue of those of us who hate making school lunches in the morning. She will make and deliver a lunch box with enough food for morning tea, lunch and afternoon tea. The packs are nutritious and fun! We get 5% back to the school of the packs sold (only on the Variety Box lunch). Check out the website: [yourlunchbox.co.nz](http://yourlunchbox.co.nz)

## Movies

Last year the mum's had a night at the movies so we thought this time we would treat the children to a film. We have secured an advance screening of The Incredibles 2 two weeks before general release. More details to come but it will be a 3pm showing on Sunday 17<sup>th</sup> June. We look forward to seeing you. Tickets will be sold on first in basis. If you wish to secure a seat then please contact Amanda by text 027 6305922 or email [amanda.briston@gmail.com](mailto:amanda.briston@gmail.com)

## PTA AGM

Our next meeting is on the 28<sup>th</sup> May at 7pm in the Eureka room. It will also include our AGM. We are needing more members as families have moved on to their next school. We are seeking a treasurer as well as chair. All are welcome to come and attend. If you are thinking of coming on committee then please come along, we would love to see new faces.

## Coming Up in Term 2

Monday May 28<sup>th</sup> – PTA AGM 7pm in the Eureka Room

Wednesday 30<sup>th</sup> May – Domino's pizza night

Thursday 14<sup>th</sup> June – Oxford Pie collection

Sunday 17<sup>th</sup> June – Movie session: advanced screening of The Incredibles 2

Friday June 29<sup>th</sup> – School Disco at the Newstead Car club

Any queries regarding the above or the PTA please contact:

**Email:** [pta@newstead.school.nz](mailto:pta@newstead.school.nz)

**Facebook:** Newstead Model Country School

**Bank account number:** ASB 12-3152-0234870-00, Newstead School Council Inc





**WE'RE HERE TO  
MAKE A DIFFERENCE,  
ONE LUNCH  
AT A TIME.**

- DELIVERED EVERY DAY
- JUST LIKE MUM USED TO MAKE
- IT'S EASY
- HEALTHY OPTIONS
- ONGOING SUBSCRIPTION
- FUEL FOR THE WHOLE DAY

**FROM ONLY \$25 A WEEK** includes daily lunch (3 to choose from), morning tea, afternoon tea plus delivery.

**GIVING BACK** 5% FROM EVERY VARIETY LUNCH BOX SOLD, GOES BACK TOWARDS THE SCHOOL TO SUPPORT THE KIDS.

**FIND OUT MORE**  
SOPHIE BECK | 027 339 9353 | [yourlunchbox.co.nz](http://yourlunchbox.co.nz)

**YOUR LUNCH BOX**

**SPORTS NUTRITION**

**EAT LIKE AN ATHLETE EVERY DAY!**

It is important to eat healthy and well-balanced meals and snacks all the time, not just when we play sport.

Include the four food groups and drink plenty of water!

This will help to keep our bodies healthy, strong and ready for action all year round.

Developed by Sport Waikato 2018



## Learn how one phone call could earn our School \$500

Cushla Moore of Bayleys Real Estate has teamed up with Newstead Model Country School to offer a fantastic referral system.

If you know of anyone thinking about selling their property in the Waikato, let Cushla know and if she lists the property for sale she will make a \$250 referral donation to our school.

Once the property successfully sells she will contribute a further \$250 giving us a total donation of \$500!

So, keep Cushla in mind should you hear any of your friends or family talking of selling their residential or lifestyle property, and help our school make the most of this referral offer.

"As a local Newstead resident and with one of my young boys not far off attending Newstead Country Model School, I am excited about the opportunity to contribute to the fundraising efforts of this great school whilst doing what I love"



Reaching Buyers **Others Can't.**



If you're thinking of buying or selling, get in touch and we can discuss what my team and I at Bayleys can achieve for you.

**Cushla Moore**

Residential & Lifestyle Sales

Success Realty Ltd, Bayleys, Licensed under the REA Act 2008

M | 027 705 5000

E | [cushla.moore@bayleys.co.nz](mailto:cushla.moore@bayleys.co.nz)

**I KNOW, I THINK, I WONDER**



**We are looking for an AG Day co-ordinator**



We need someone who can help to organise the day. **Farming back ground is not a necessity.** All the information is here for you, we just need someone to take up the reins and run with it.

The judges are booked, the date is set.

This is a fun day which the children all enjoy, even those without a calf/lamb/kid can come along and have fun.

Please come to our aid!

*If you can help then please contact*  
*Amanda on 027 6305922 or Tara on 0274458044*  
*email: [amanda.briston@gmail.com](mailto:amanda.briston@gmail.com), [tascott@extra.co.nz](mailto:tascott@extra.co.nz)*



**WE NEED  
YOU  
TO  
JOIN OUR  
CREW**

**I KNOW, I THINK, I WONDER**