

NEWSTEAD

MODEL COUNTRY SCHOOL

Phone: 07 8565946

www.newsteadschool.co.nz

Mobile: 02748968309

Email: office@newstead.school.nzFriday 23rd October 2020

Dear Whanau and Students,

Thank you to everyone who came along to support our Ag Day last Saturday. The weather and the animals behaved themselves and everyone had a great time. This is such a special occasion for our rural school and it couldn't have been done without Marg and Steve Clark and their wider support crew. I can't thank them enough. Congratulations to all the participants including those who gained placings, ribbons and cups. Special thank you too to Amanda and Sarah Briston for running and judging the Pet Competition.

I'd also like to thank Helen Ulyatt and her wonderful PTA team for organising the stalls out on the court during the day. It helped add to the atmosphere.

Group Day

Last Wednesday it was our school's turn to host the local Country Schools for our annual Group Day. Newstead came second which was great and all the children (and animals) represented our school with pride. Again, special thanks to Marg and Steve for organising and running the whole event and to the PTA for the sausage sizzle and food stall. I received lots of positive comments from visitors about the day and the school in general.

Amazing Race

Wednesday was a busy day all round. Mr Carroll took two teams of senior students to the annual Amazing Race which is held at the Hamilton Gardens. This event has a number of 'pitstop leadership' challenges that include physical, cognitive and creative tasks that each team has to do. Although we did not get any placings this year, both teams performed very well and they enjoyed themselves. Thanks to all involved.

Continued over page...

UPCOMING DATES:

October

26	Labour Day – no school
28	Waikato Show - Lambs/Goats
29	Waikato Show – Calves
	BOT Meeting

November

20	Teacher Only Day – No School
----	------------------------------

December

10	Final Assembly
11	Teacher Only Day – No School
14	School Finishes 12pm – last day for the year

TERM DATES FOR 2020

Term 4 – Monday 12 Oct – Tuesday 15 Dec

Term 1 2021 – School Starts
Wednesday 3 February

NOTICES:

Most notices sent out can be found on the school website under the heading *Our Info, Recent Notices*:

Click Here [Recent Notices](#)

School News

Continued from front page...

Lit Quiz

We also sent a team on Wednesday to the annual Lit Quiz which was held down the road at Berkley Normal Middle School. Like the teams at the Amazing Race, we didn't get a placing but everyone did really well and represented our school with respect and pride. Thanks to June Malcolm for taking this.

It's been a busy week here this week. We're enjoying the warmer weather.

Have a great long weekend everyone!

Ka nui tēnā mō tēnei wā.

Drew Campbell - Principal

School Bank Account Details

Newstead Model School
ASB Bank 12-3152-0233579-00

Class Awards

Tui: Flynn, Mack

Welcome new students to Tui Class:

Ellie McCullum, Parker Woodmass, Dylan Hayward.



School Lunches

At Newstead School we have 2 options for those that would like to buy lunches:

Daily:

Delivered to the school office before morning tea
www.yourlunchbox.co.nz for more information

Friday:

Delicious lunches from LunchOrders
www.lunchorders.co.nz
for more information and registration

PTA News

The PTA is open to all Newstead parents and caregivers.

If you want to know more, you can find Sarah and Helen at After School Care most days or please email: pta@newstead.school.nz

PTA contact details



pta@newstead.school.nz



Newstead Model Country School



ASB 12-3152-0234870-00
Newstead School Council Inc



shutterstock.com • 667103890

+

?

Dylan Allen's lamb, Dotti, needs a mate. If anyone has a lamb that would like to join her in her big paddock give Tracey Allen a call. We have plenty of grass and Dotti is lonely.
Thanks
Tracey 022 398 4428

PTA News

Thank you everyone very much for the awesome contribution we had to AG Day this year. Congratulations to all our winners whether it was through showing your animals or competing in our Arts and Crafts event. It's fantastic to see the effort the children put into looking after their animals and the amazing artwork that was on show.

We had a huge response to our raffle requests and our 6 raffle prizes looked fantastic. A massive well done to our 6 winners.

We received a fabulous array of baking this year for our cake stall. Thank you to all those who baked and decorated some lovely cakes, biscuits and fudge for us.

The list of **THANK YOU's** is long and apologies if we have missed anyone.

AG Day and Arts&Crafts is a big event on the school calendar and it would not be what it is without the extraordinary effort that goes into it from **Marg Clark** and her husband **Steve** who put lots of hours into making the day run smoothly. They prep the field for our children to show their animals, coordinate with stewards and judges and work tirelessly in the build up to the event. They are superstars.

We also rely on the wonderful **Tracey Monehan** to run the Arts and Crafts events and she dedicates her precious time making it fun and relevant to our whole school, thank you Tracey we really appreciate your hard work.

We also need to thank **Ariana Hemara** and **Amy Carr** for carrying out registration of the Arts and Crafts on the Friday morning and our **Year 6 mentors** for being runners for us on the Friday morning.

A big thank you to all the judges for the animals and our Arts and Crafts and our past students who did the stewarding for us on the day.

This year we received Sponsorship from many people in our Newstead Community:

Nationwide Livestock (The Mathieson Family) who sponsor all the Arts and Crafts ribbons.
Peter and Amanda Briston at **Cambridge Vets** who sponsor the AG Day ribbons.
Also to **Dairy NZ** and **LIC** who also sponsor the event.

A massive thank you to **PlaceMakers Te Rapa** and **PlaceMakers Huntly** who very kindly donated \$100 and a bag of lollipops to us. Thank you to **Chris and Michelle Calcott** who arranged for us to get the **PlaceMakers** BBQ and helped to get it all set up on the day.

New World Hillcrest who also very kindly donated money to the event.

ASB who sent us 2 staff members to help on the BBQ and brought a gazebo with them.

Kay Warrender, The Long Black Coffee cart, who provided us with drinks.

Barry Tidd and **Sandra Wallace** who donated the sausages and bread for the BBQ.

The **Stockdale Family** who arranged for us to receive some LIC goodies that went to those who completed our Scavenger hunt.

The **James Family** who donated some potatoes and onions.

Paula Mathieson who helped Marg and Steve with set up the day before and tidy up the next day and who made 4 amazing cakes for us to sell on the cake stall, thank you.

John Davis who cooked up a storm on the BBQ.

Karen Pratt who helped out on the cake stall for us.

I KNOW, I THINK, I WONDER

Amanda Morris who made 2 spectacular cakes for us to sell which barely made it to the cake stall table before we had 2 buyers.

Rochelle Taylor who helped with lots of prep behind the scenes, especially with the run up to the event. She helped with the advertising, printing certificates, organising food and helped out on the Cake Stall on the day.

To **Caro Staheli** and **Amy Richdale** for their amazing donut selling techniques.

Past students **Aysha Clark** who helped out on the BBQ for us and **Ashley Calcott** who gave time to help on the stalls.

Lily Wilson who ran the Scavenger Hunt and **Sam Calcott** who helped out on the lolly stand.

To our lovely 3rd year students **Renee and Dom** who came back after finishing with us last term and spent a few hours helping out with the raffles.

Also to our fabulous **Teachers** who helped with the collecting of the raffle prizes, encouraged the kids to participate and assisted in running the event on the day.

Our great Principal **Drew** who can't do enough to help, he is a massive support and the first one there and last one to leave on the day, we are lucky to have him.

Chrissy who helped with all the administration for the day.

Last but definitely not least to the great team that help me put the day together, **Ozlem Taner** our Treasurer and banker, **Sandra Wallace** who tirelessly helps with the run up to any event and worked the cake stall on the day. **Ali Ryan** our BBQ team leader and her lovely partner Eion. **Nicole Lannam** and her family for the massive effort doing the lolly necklaces. **Hannah Cleland** who organised the donuts for us. **Jacqui Wilson** who sold as many raffle tickets as she possibly could on the day and **Zara Tester** who loaned us a huge gazebo and some games for the kids and sold donuts for us.

This huge effort would have gone to waste without our lovely community who turned up on the day and helped us make just over \$2000 for our school.

Thank you everyone
Helen



2020 Ag Day Arts & Crafts Winners

Photography: Happiness Is

	<i>Junior</i>	<i>Intermediate</i>	<i>Senior</i>
1 st	Willow Stockdale	Zoe Elworthy	Laiton Stockdale
2 nd	Kiani Clark	Lily Wilson	Zoe Parton Wicky
3 rd	Clara Parton Wicky	Sophia Ulyatt	Maria Plowright
4 th	Sahara Roskam	Yana Dyer	Jamie Edwards

Recycling: Egg Cartons

	<i>Junior</i>	<i>Intermediate</i>	<i>Senior</i>
1 st	Leo Wright-Stow	Cara Monti	Brooke Carter
2 nd	Kiani Clark	Lily Wilson	Cory Mathieson
3 rd	Willow Stockdale	Cara Adern	Laiton Stockdale
4 th	Oliver Wilson	Luke Orum	Maria Plowright

Baking: Savoury Creations

	<i>Junior</i>	<i>Intermediate</i>	<i>Senior</i>
1 st	Ari Clausen	Kurt Bajuyo	Julian Syben
2 nd	Ashley Edwards	Lily Wilson	Lucy Briston
3 rd	Braedyn Raffan	Kaleb Wallace-Tidd	Brooke Carter
4 th	Penelope McCullum	Luke Orum	Maria Plowright

Poster: Fantasy

	<i>Junior</i>	<i>Intermediate</i>	<i>Senior</i>
1 st	Kiani Clark	Isla Staheli	Daniel Pryor
2 nd	Willow Stockdale	Nico Revell	Brooke Carter
3 rd	Ashley Hollings	Lily Wilson	Laiton Stockdale
4 th	Leo Wright-Stow	Zoe Elworthy	Corey Mathieson

Hands & Headbands

	<i>Junior</i>	<i>Intermediate</i>	<i>Senior</i>
1 st	Lewis Moore	Pippi Cleland	Maria Plowright
2 nd	Willow Stockdale	Nico Revell	Cassidy Walden
3 rd	Quintin Silvester	Cara Ahern	Lucia Revell
4 th	Kiani Clark	Kurt Bajuyo	Caiden Binzegger



I KNOW, I THINK, I WONDER

Waikato Show

Lambs and Goat Section will be held on 28th October 2020 (10am Start)
Calf Section will be held on the 29th October 2020 (10am Start)

The Waikato King Country Boys and Girls Agricultural Calf Club Section of the 2020 show are committed to providing the calf club section in a safe environment. However in order for things to run smoothly and in a timely manner we need your support.

PLEASE READ AND RETAIN THE INFORMATION BELOW

Showing Waikato Limited (SWL) have instructed the Waikato King Country Boys and Girls Agricultural Calf Club Section to run the calf club under Government Covid H & S regulations. We are to plan and run the day under level 2 rules.

Which means the following:

Maximum of 100 people per defined area. You are NOT allowed to go between areas. There will be 2m security fencing around and between all areas.

Must unload children and animals at correct areas and then drive around to next area to drop off next child and animal.

Only ONE nominated named Adult on this entry form will be able to accompany the child into the designated area on show day.

Children and animals will stay in their defined area for the day. There will not be a champion ring for all 1st place getters to go to after each event. Champions will be awarded in your defined area.

Showing Waikato Limited (SWL) has made it extremely CLEAR that if at 10am on Show Day setup isn't done correctly following Government Covid H & S regulations they will CANCEL the show on the spot.

However if we are still in Level One at show day. We will following Government Covid H&S level 1 Regulations.

CONTACT TRACING

Anyone entering must contact trace themselves in using the government Covid-19 App. Contact information will also be used from entry forms to keep a list and details for contact tracing if required. Only those entered online prior to the show and one Guardian per entry also listed on the entry form will be permitted to enter into designated area for the show day. Maximum number per defined area = 100.

CLEANING AND HYGIENE

Everyone is responsible for applying hand sanitizer before entering the designated competition area. Sanitizer will be provided at entry points.

Please ensure all gear is kept with you at all times in your designated area. Please only use Toilets assigned for your designated area. Wash your hands regularly and sneeze into your elbow.

STAY HOME

If you or a member of your household are unwell you should stay home. You should not attend the show or leave home if you are displaying symptoms of Covid-19, awaiting a test result or required to self isolate.

PHYSICAL DISTANCING

Please ensure that you remain in your bubble and maintain 2m distancing when entering exiting and moving towards your designated areas. Please remain in your designated area until called into the show ring.

Entries MUST be received before 5pm Friday 23rd October 2020.

Entries will not be accepted on the day and all entries must be received online before Show day.

Please only enter one child per entry form.

Please enter here <https://waikatoaandp.co.nz/exhibitor-information/boys-girls-agricultural-club/>

Any enquires to Waikato King Country Boys and Girls Agricultural Calf Club Chairman - Alan Henderson - cranleigh@farm.org.nz - 0274762579

Thanks, Todd van Berlo, Head Calf Steward

I KNOW, I THINK, I WONDER

Kindo Payments/School App



[Click Here to register with Kindo](#)

Questions? hello@mykindo.co.nz

myKindo phone app is now available.

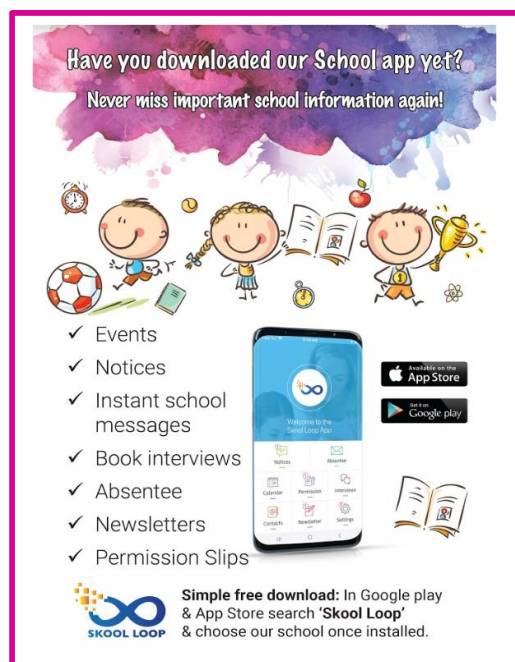
No more passwords! Log in with a touch, Face ID or PIN number - making it easier and faster to order and pay at our school. Search for "myKindo" in the app stores.

iPhone App Store link:

<https://apps.apple.com/nz/app/mykindo/id1445622107>

Google Play link:

<https://play.google.com/store/apps/details?id=nz.co.tgcl.mykindo>



Community Notices

New UpdateWaikato District News October 2020 [Click Here](#)

New UpdateWaikato Expressway September 2020 [Click Here](#)

Parenting Helpline

Free, all ages, all issues. 9am-9pm 7 days. Advice, support and strategies on any parenting challenges.
Ph: 0800 568 856. www.parenthelp.org.nz

Hamilton BMX Club [Click Here](#) for more information

Children's Ear Clinic - There is now a shortcut for you to access the current children's ear clinic programme. These will now not be circulated each school term as we have previously done [Click Here](#)

Single Parent Services – to view their latest newsletter please [Click Here](#)

Looking for a place to be yourself?
Always wanted to share your
super-silly-nut-bar-flavour energy
with the world?

You can at Marrzipan

Classes in social skills, positive
thinking and self belief for the
super-shy to the super-high!

SIGN UP FOR A TRIAL CLASS TODAY
www.marrzipandrama.co.nz

9 Classes including two showcases per term.
Maximum 10 students per 45 minute class.

LABEL READING

There are lots of different nutritional claims on packaging but it's best to check for yourself by reading the label. Remember to always use the 100g column.

TIP: Fibre helps us feel full for longer and keeps our digestive system healthy.

	PER SERVE	PER 100g
Aim for less than 10g SUGAR per 100g		
Carbohydrate, Total (g)	20.1	67.0
-Sugars (g)	0.8	2.8
Aim for less than 10g TOTAL FAT per 100g		
Fat, Total (g)	0.4	1.4
-Saturated Fat (g)	0.1	0.3
Aim for more than 5g FIBRE per 100g		
Dietary Fibre (g)	3.0	10.1
Sodium (mg)	81	270

www.sportwaikato.org.nz
© This resource was developed by Sport Waikato 2020

Lugtons ROUND THE BRIDGES
Sunday 15 November • 2020

grassroots trust sport waikato

WIN SPORTS GEAR FOR YOUR SCHOOL!

All schools with 10 participants or more will be in to win 1 of 5 x \$200 vouchers to spend on Sports Equipment for your school! Winners announced prize giving on Race Day Sunday November 15th.

REGISTER YOUR SCHOOL TEAM TODAY:
www.roundthebridges.co.nz

== SPEAK4 == SUCCESS

KIDS SPEAK OUT!

No Confidence – School speeches – Bullies – a NIGHTMARE?
After School Classes: Kids gain real life skills & have fun!
LEADERSHIP: School Holidays 1-4 days with Certificate - Age 10+
CHALLENGES: School Holidays Coping with life challenges - Age 10+
RING Roz 027 248 2888 www.speak4success.co.nz

MATANGI SCHOOL FUNDRAISER

Christmas Pop Up Market

21 November | 4-8 PM | Matangi Factory
Purchase tickets: www.popupmarket.co.nz



www.shutterstock.com · 559416970

MUSIC LESSONS AT SCHOOL

We are very fortunate to have a fabulous music teacher available to come into school to teach piano, singing and theory lessons. Spaces are now available.

Beverley Pullon holds a Doctorate in Musical Arts. She has been teaching for many years and has a vast amount of experience to pass on to our children.

Lessons are currently available on Wednesday during the school day.

For more information please contact **Beverley** directly on **0274257235**, or speak to Amanda Briston, Lucy's mum.



Learn to play an instrument with:

MUSIQHUB
PLAY SMART

Contact **Carl** for more info:

carl.watkins@musiqhub.co.nz

027 388 9558